

How to do to reach La Cité/Hotels from Nantes Airport

- Nantes Airport: Airport Shuttle from Nantes Atlantique to Train Station: 20 minutes and 9,00€



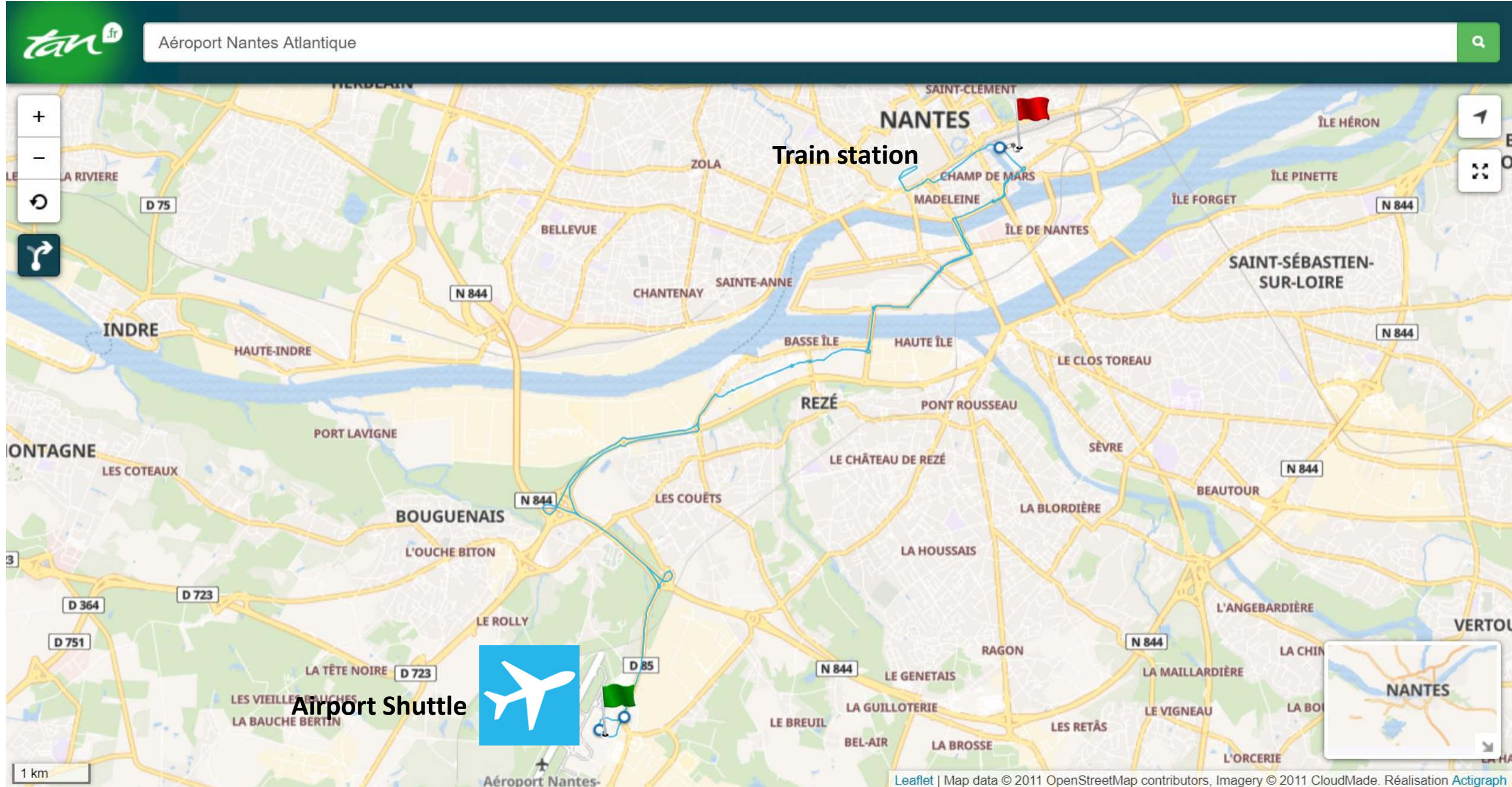
- At Train Station, follow the signs to reach:

Welcome to Nantes
Bienvenue à Nantes

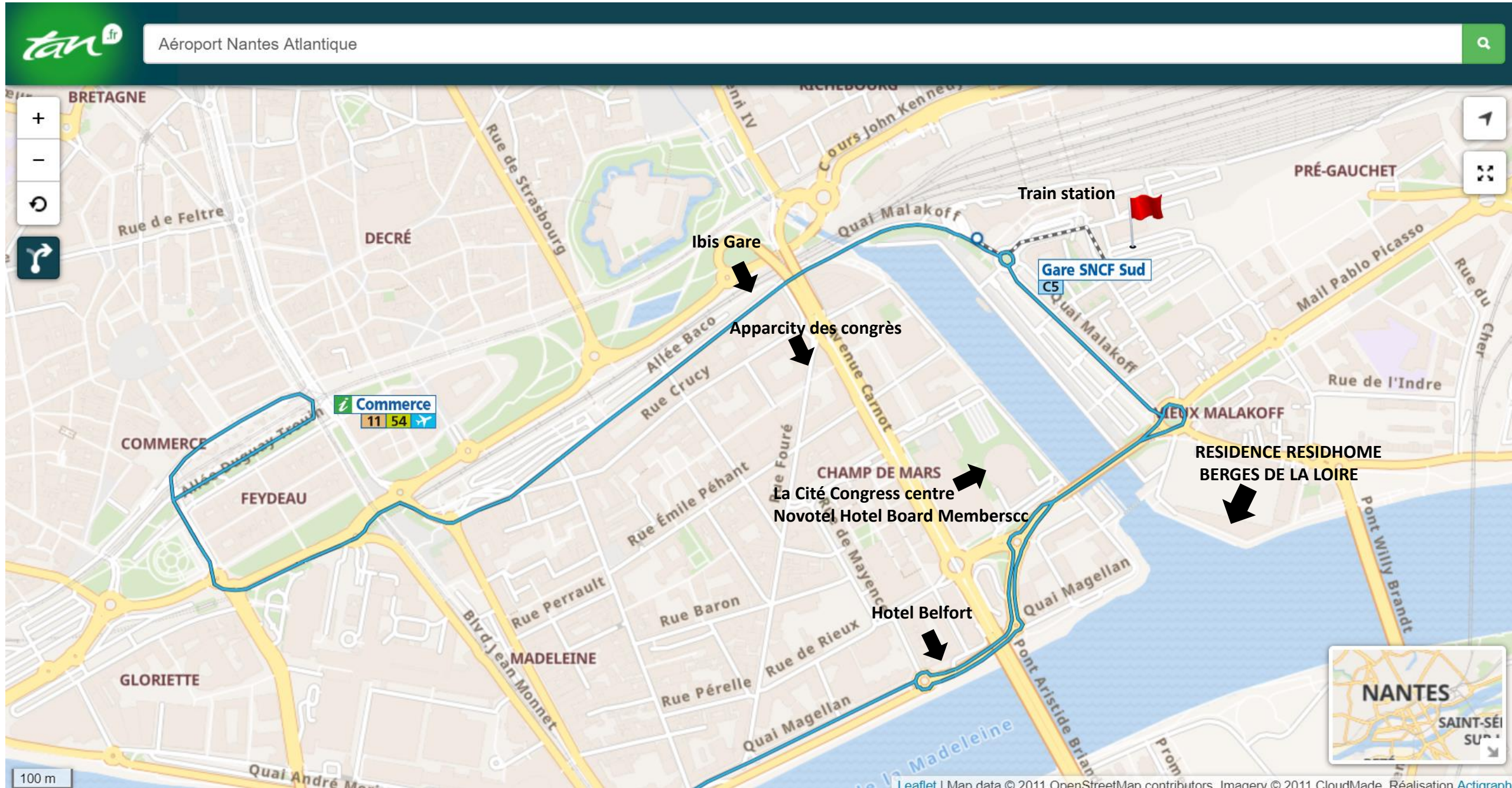


- La Cité: 5 Rue de Valmy
 - Novotel, 3 Rue de Valmy
 - Ibis Gare, 3 Allée Baco
 - Résidence Résidhomme Berges de Loire , 3 allée Jacques Berque
 - Apparcity des Congrès, 2 Rue Emile Masson
 - Hotel Belfort, 1 rue de Belfort
- A hostess will welcome you at the airport AETE Desk

Airport shuttle line: from Airport to Train station (20mn)



Airport shuttle line: Train station, Hotels and La Cité congress centre



How to do to reach La Cité by Car

- Nantes is the point of convergence of numerous highways (N165 / E60 towards Brest and Quimper, N137 towards Rennes) and expressways (A11 towards Angers, Le Mans and Paris and A83 towards Niort, Bordeaux and Toulouse).
- You can easily park the car at the parking “Cité Internationale des Congrès”, 5 Rue de Valmy 44000 Nantes, with 450 parking spaces and more than 2000 places available in the surrounding parking lots (www.parkings-nantes.fr).

How to do to reach La Cité by Train

- The TGV train station is located in front of the City (south exit). Nantes is only 2 hours from Paris (Monparnasse station with 21 trains a day) and at 3 hours from Paris-Roissy CDG airport (4TGV a day). TGV Lines connect big cities in France (Lyon, Lille, Strasbourg, and Marseille)
- At Train Station, follow the signs to reach:
 - La Cité: 5 Rue de Valmy 44000 Nantes



Welcome to Nantes
Bienvenue à Nantes

